

ENTRYWAY 07 PAST PRESENT FUTURE

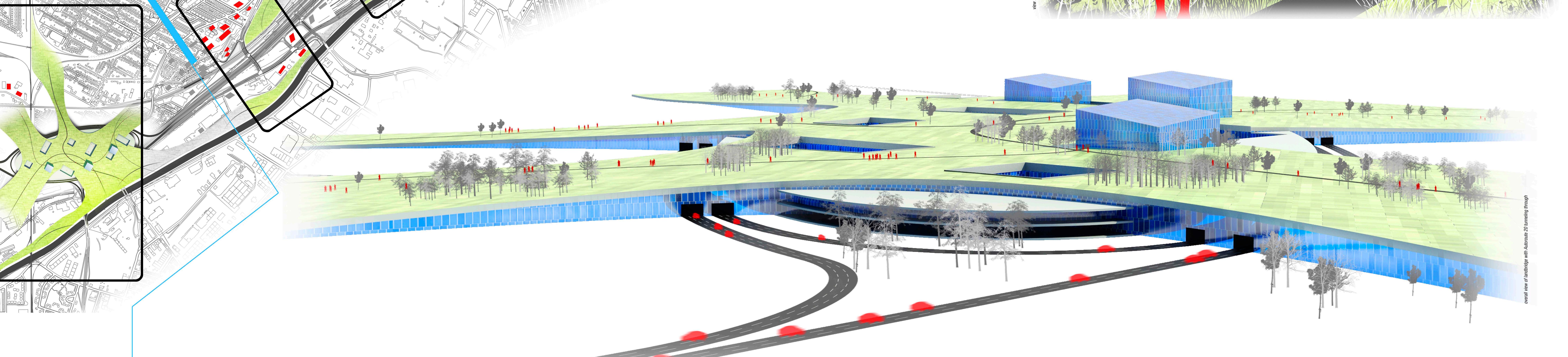
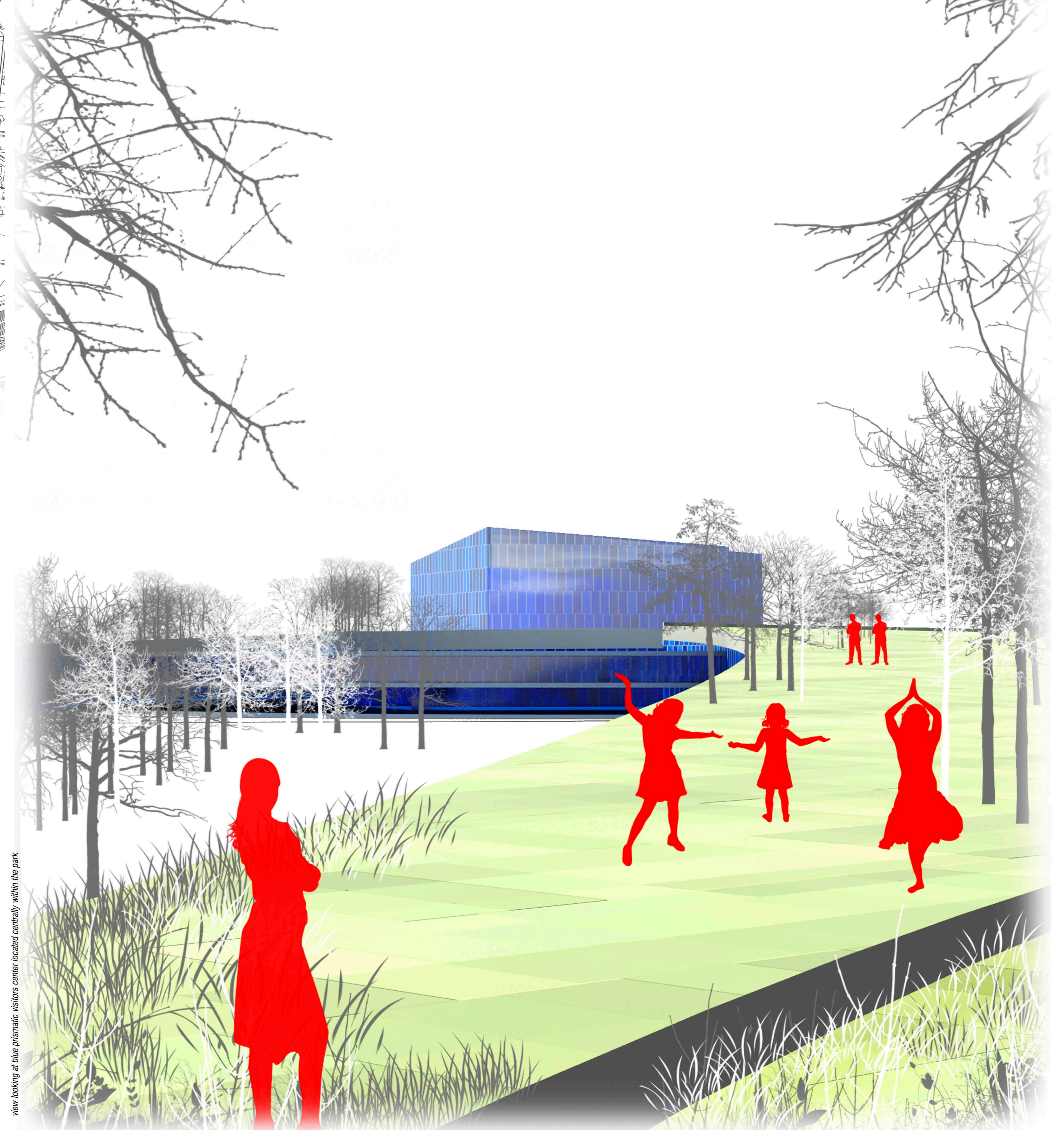
The proposed development around the Turcot Interchange will help densify the commercial and retail condition for the bustling neighborhoods. With a vital new pedestrian friendly infrastructure, a mixture of mass transit options with bike trails, and slender parks next to the canal, the entryway into the city becomes a good mix of activity as the low scale buildings give way to the urban center.

PATHWAY 05 PAST PRESENT FUTURE

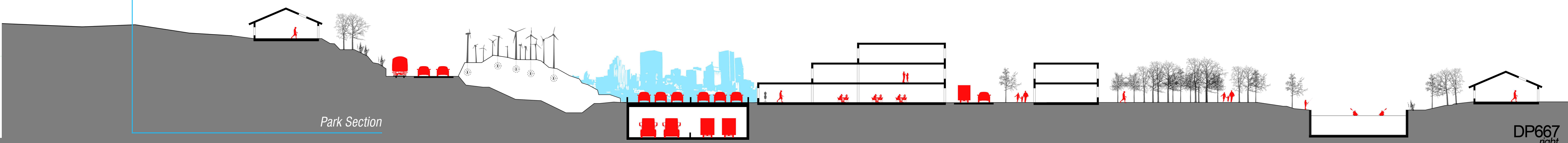
Our proposal is to separate highway traffic typologies. Truck traffic currently accounts for approximately 18% of the highway traffic on Autoroute 20. By adding a sub-grade transit route for trucks and delivery traffic, we will streamline movement on the 6-lane highway currently on grade. This improves the efficiency of the commercial traffic, which will better the city's economy. The new traffic tunnel has excavated soils that are re-deposited on the brownfield just East of the Saint-Pierre Interchange. The new hillside is fitted with a series of windmills that provide energy to the grid while burning toxins in the re-deposited soils through a process of bio-remediation, thus stabilizing the condition. Eventually this grows into a massive new park-like landscape that allows for views to the canal to the South, the water beyond, and the city to the East.

GATEWAY 06 PAST PRESENT FUTURE

The new hill-side park and windmill farm to the North, as well as added light commercial and retail programs to the South, frame the highway as it arcs around to reveal the city for the first time. This new vision filled with parks, renewable energy sources, a vital economy, and a truck-free autoroute, establishes a new identity for the city – it becomes the new gateway to Montreal.



Existing Neighborhoods | Tram | Local Access Road | Wind Turbines Brownfield Bioremediation | 6 Lane Commuter Expressway 4 Lane Sub-Grade Freight Tunnel | Light Commercial / Retail | Local Access Road | Retail | Waterfront Park | Recreational Canal | Existing Neighborhood



Park Section