

TISSURE PRISMATIQUE

PRESENTÉ PAR:



LUMINOTHÉRAPIE
30 MAI 2014



ROLAND ROM COLTHOFF

ARCHITECT, OAA



PIERRE-ALEXANDRE LE LAY

BSC (BIOLOGY), MARCH



AARON HENDERSHOTT

DIP. (FASHION TECH.), MARCH



ERICA GOVAN

BES (DESIGN ENV.), BARCH

JACOB SHANK

BEVDS (DESIGN ENV.), MARCH



MATTHEW LAWSON

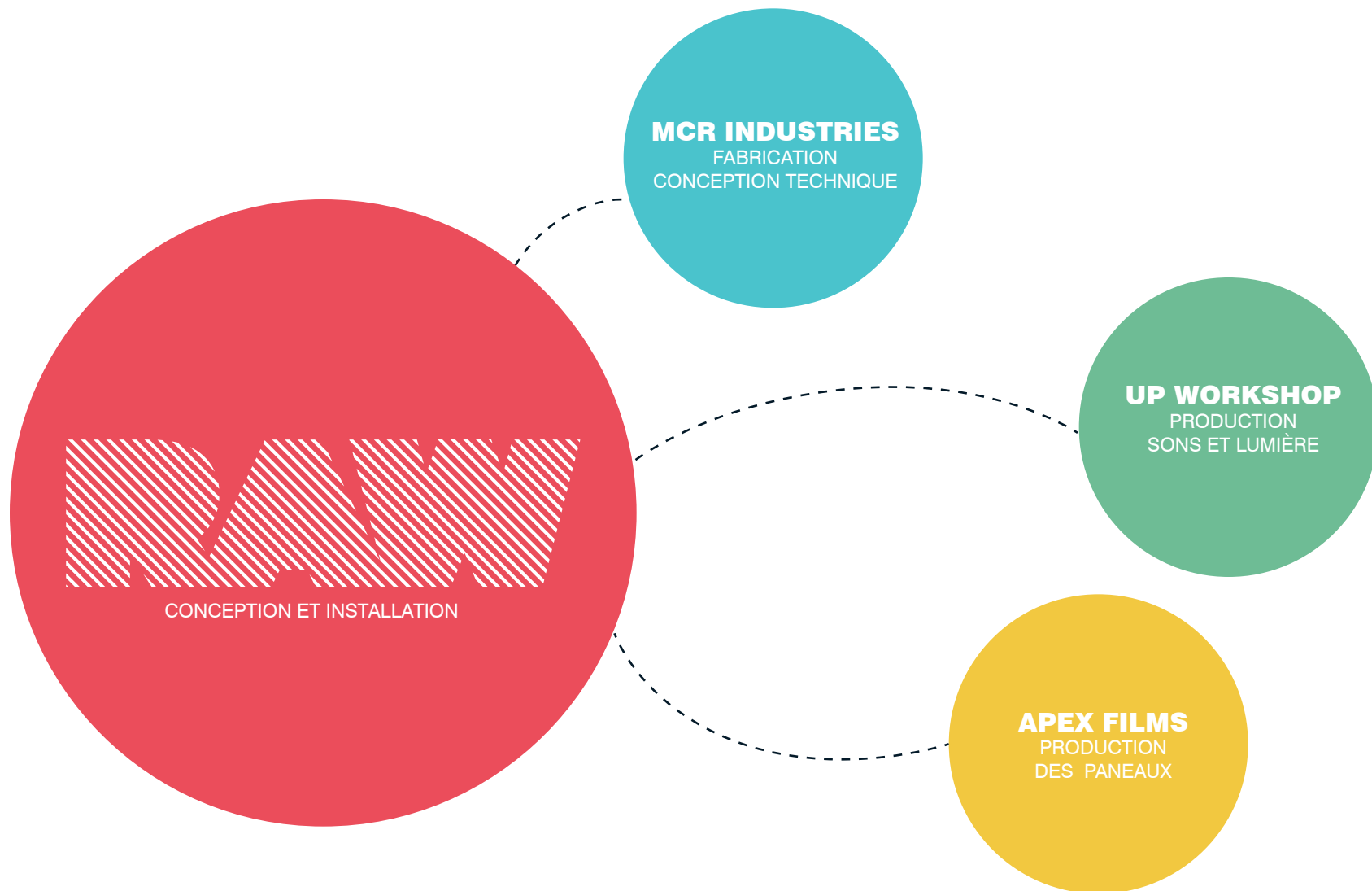
BAS



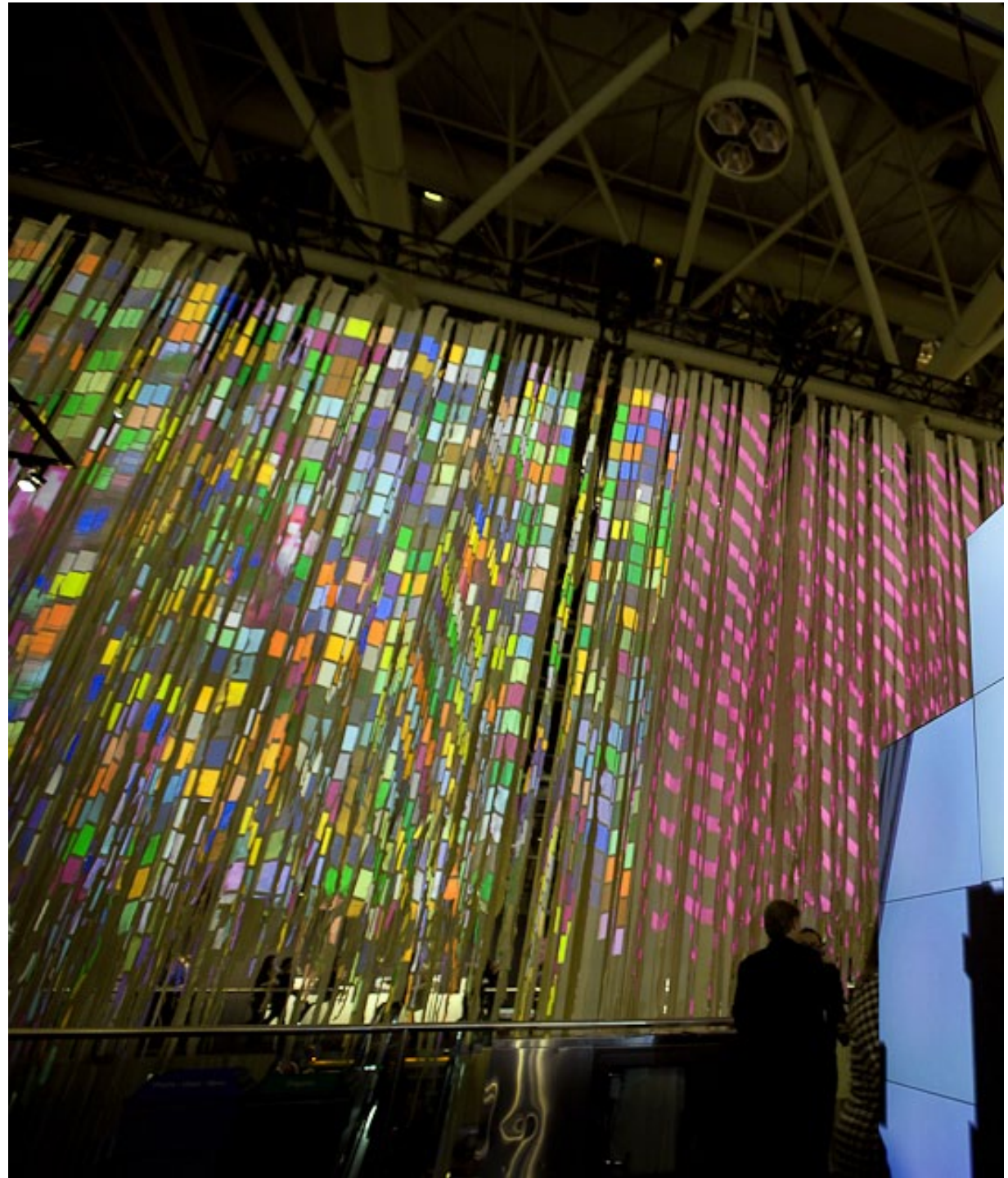
MATHIEU BLAIS

BAS, MARCH











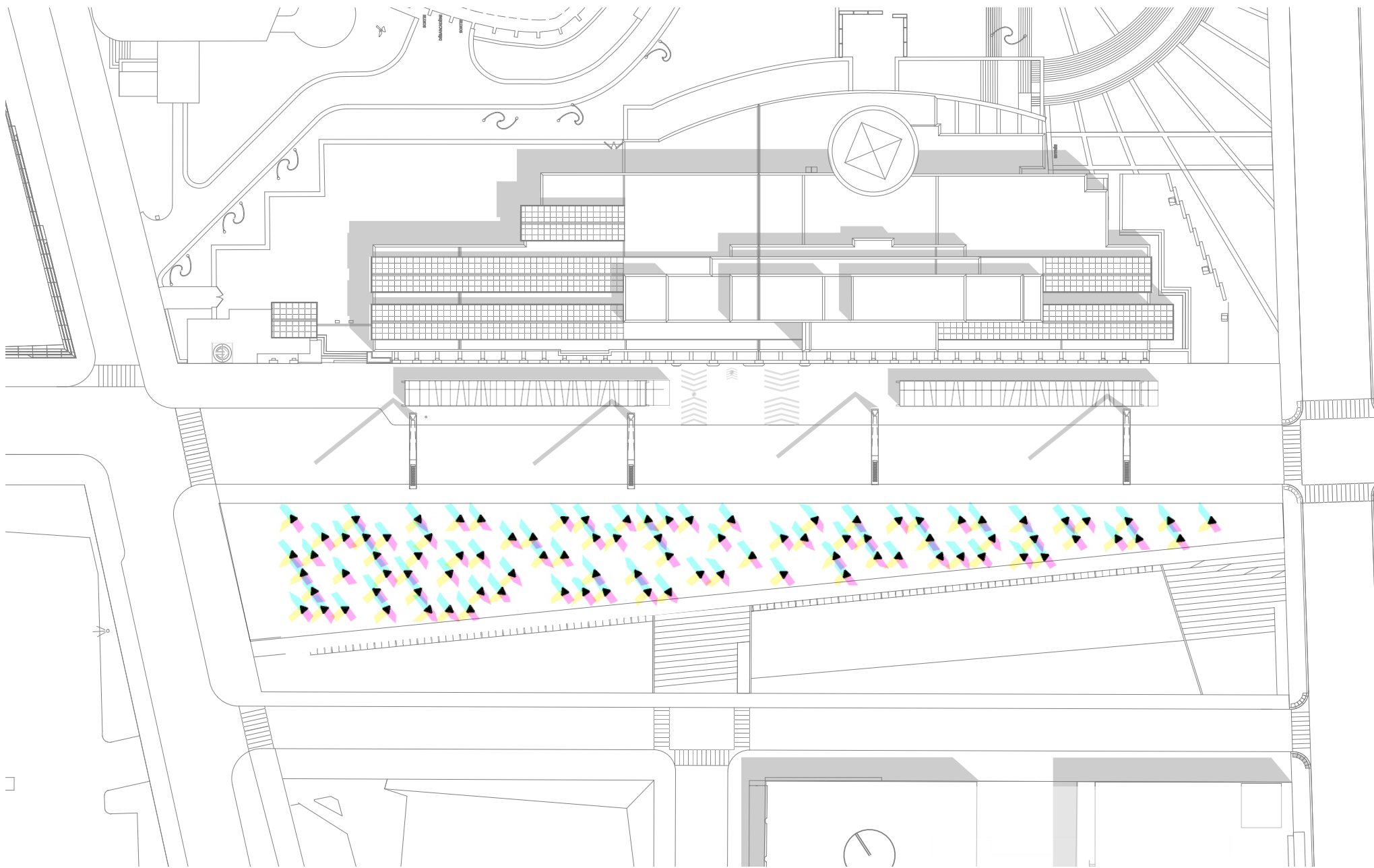


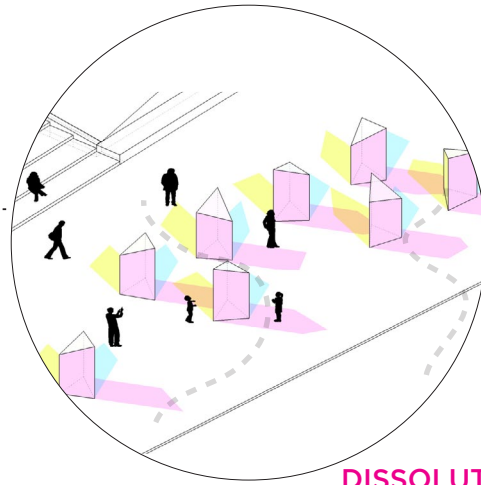
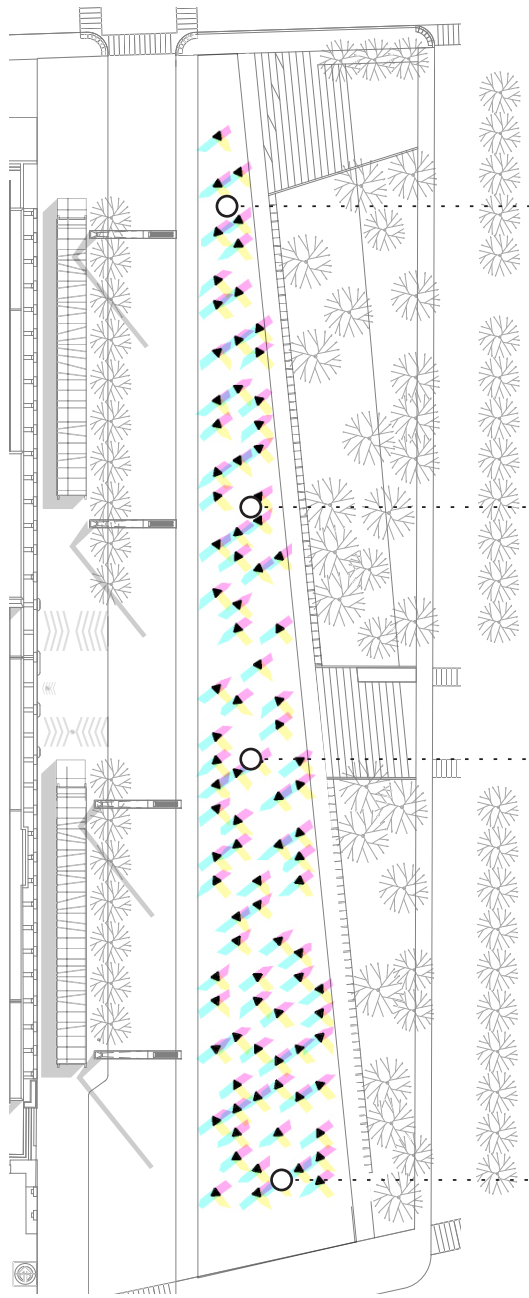
PERSPECTIVE AÉRIENNE

TISSURE PRISMATIQUE

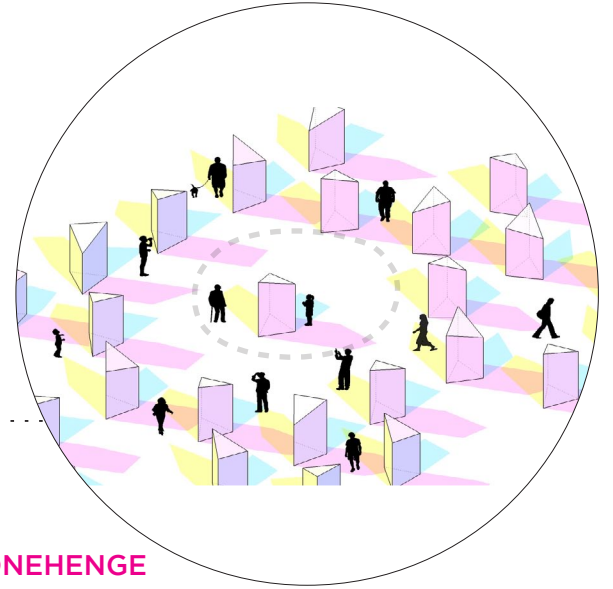
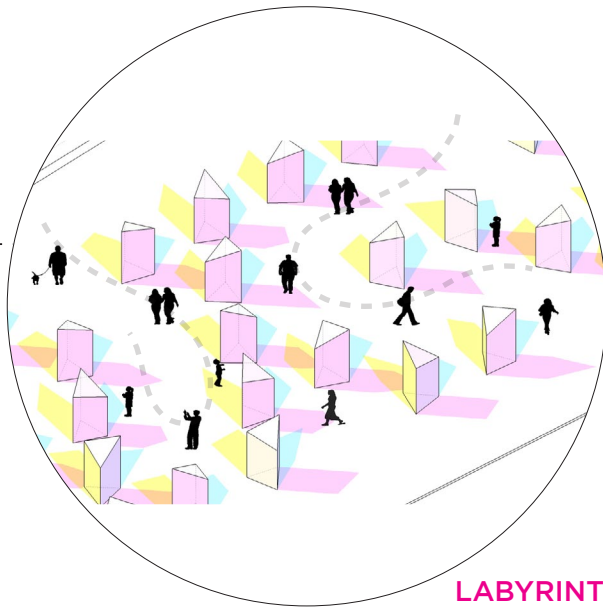
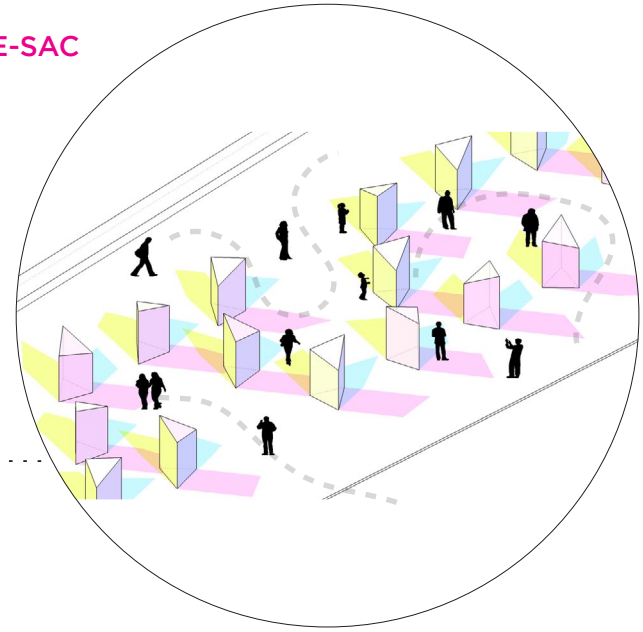
LUMINOTHÉRAPIE | 30 MAI 2014







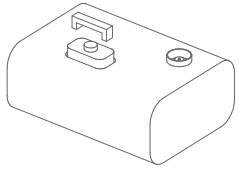
CUL-DE-SAC





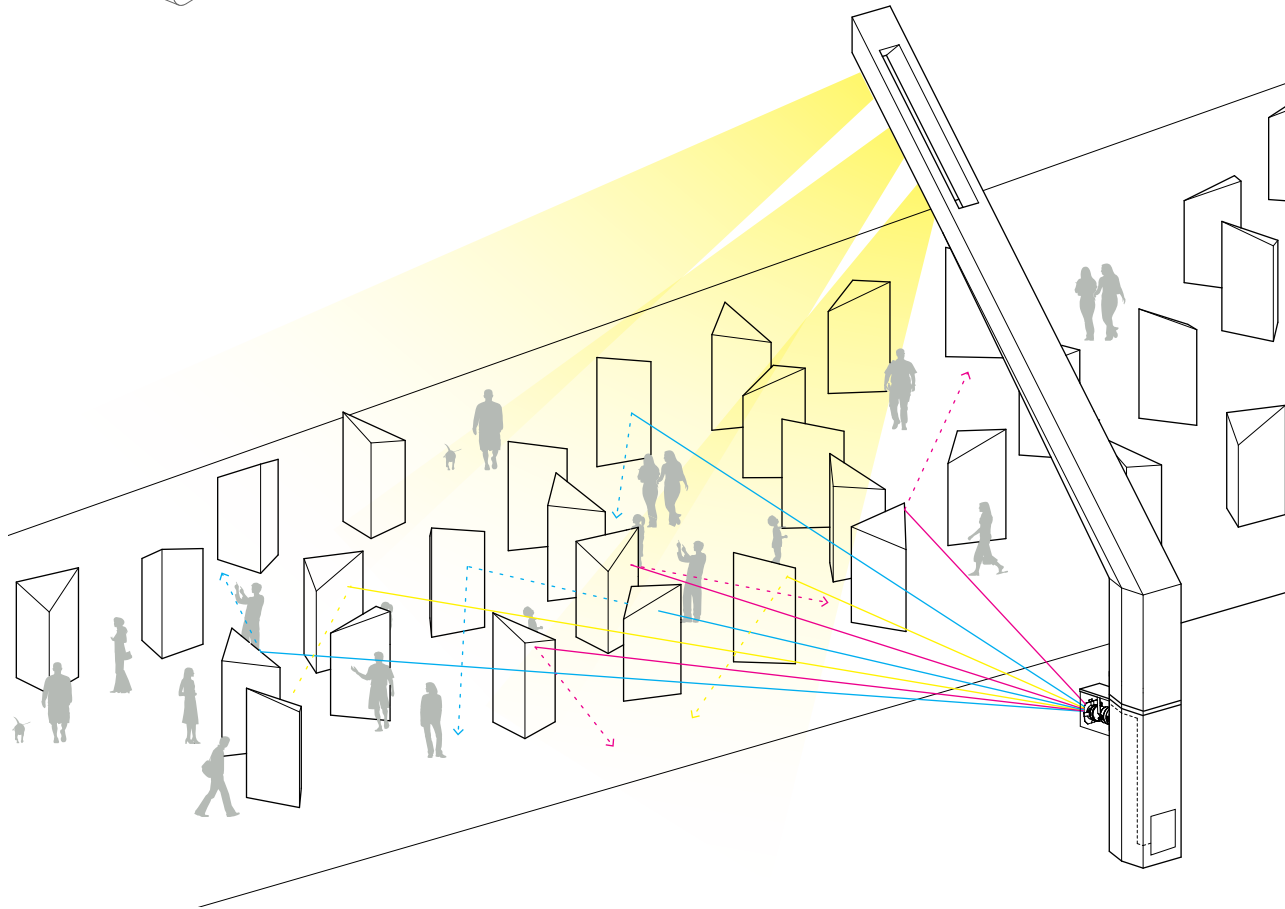






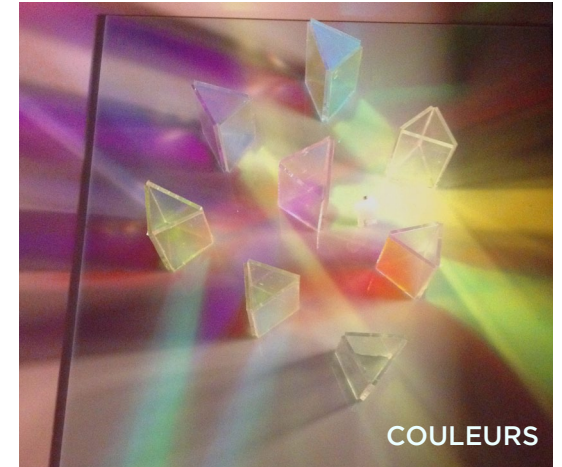
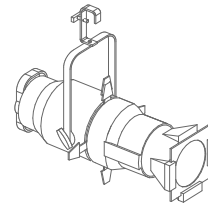
MACHINE A FUMÉE

- 110V
- 750W
- POUR L'USAGE EXTERIEUR

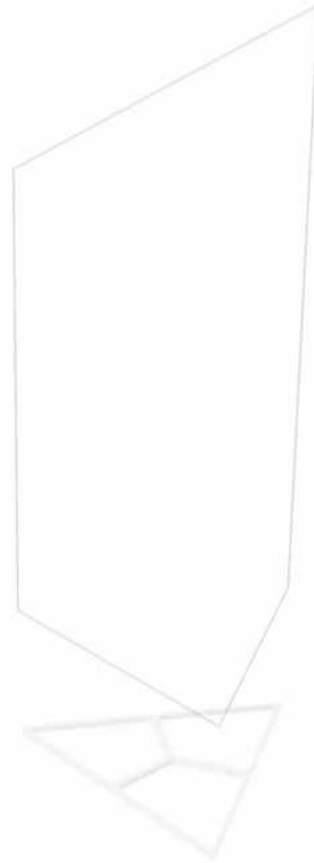


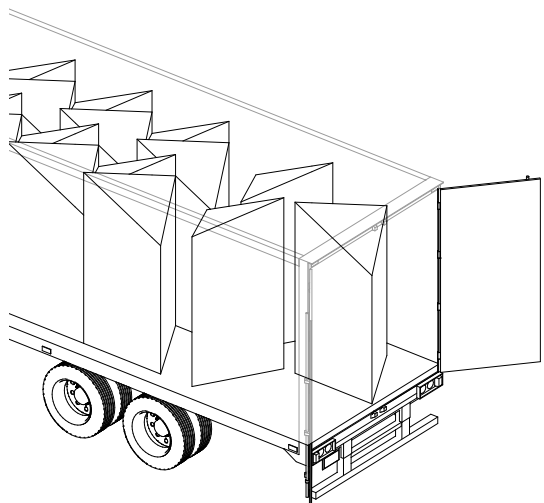
PROJECTEUR "GOBO"

- 110-130v
- 95W
- LED
- POUR L'USAGE EXTERIEUR



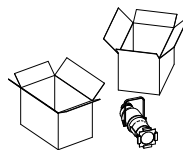
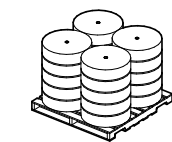
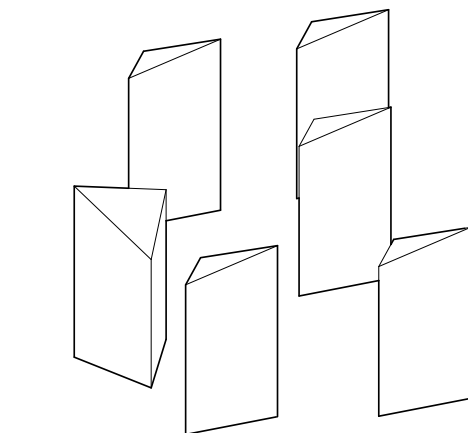






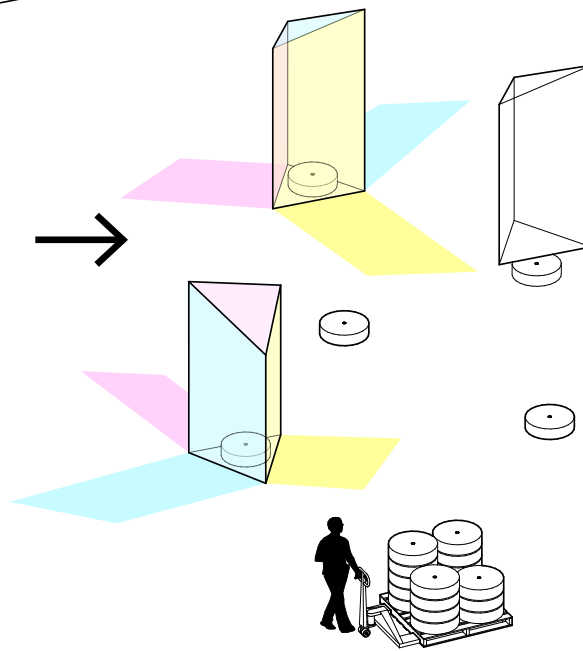
TRANSPORT DES PRISMES

- fabrication hors-site
- transport camion (2 x 53')



TRANSPORT DES BASES

- fabrication locale
- transport camion (1 x 20')



MONTAGE ET ASSEMBLAGE

- sur place





TISSURE PRISMATIQUE

LUMINOTHÉRAPIE | 30 MAI 2014

