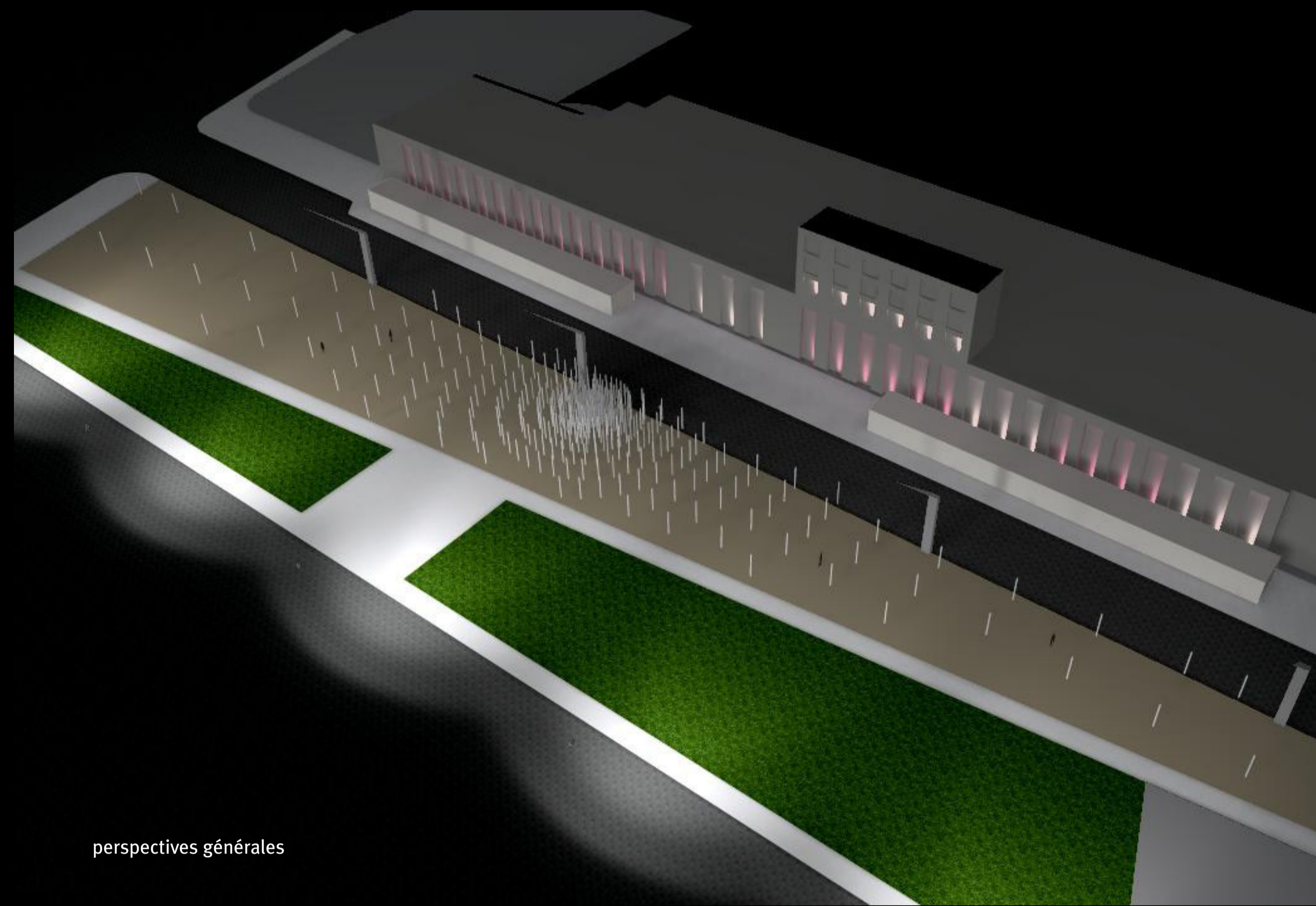
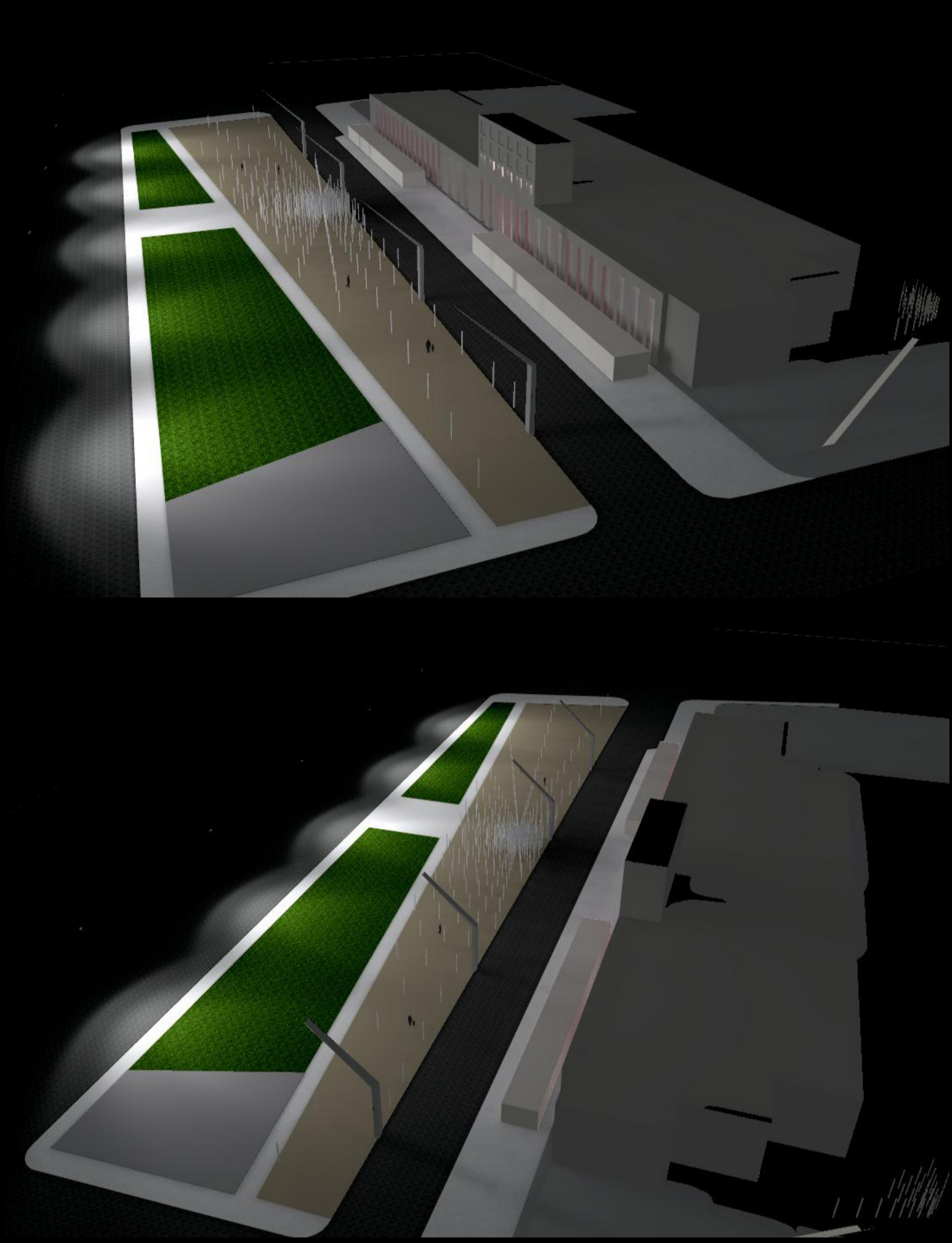
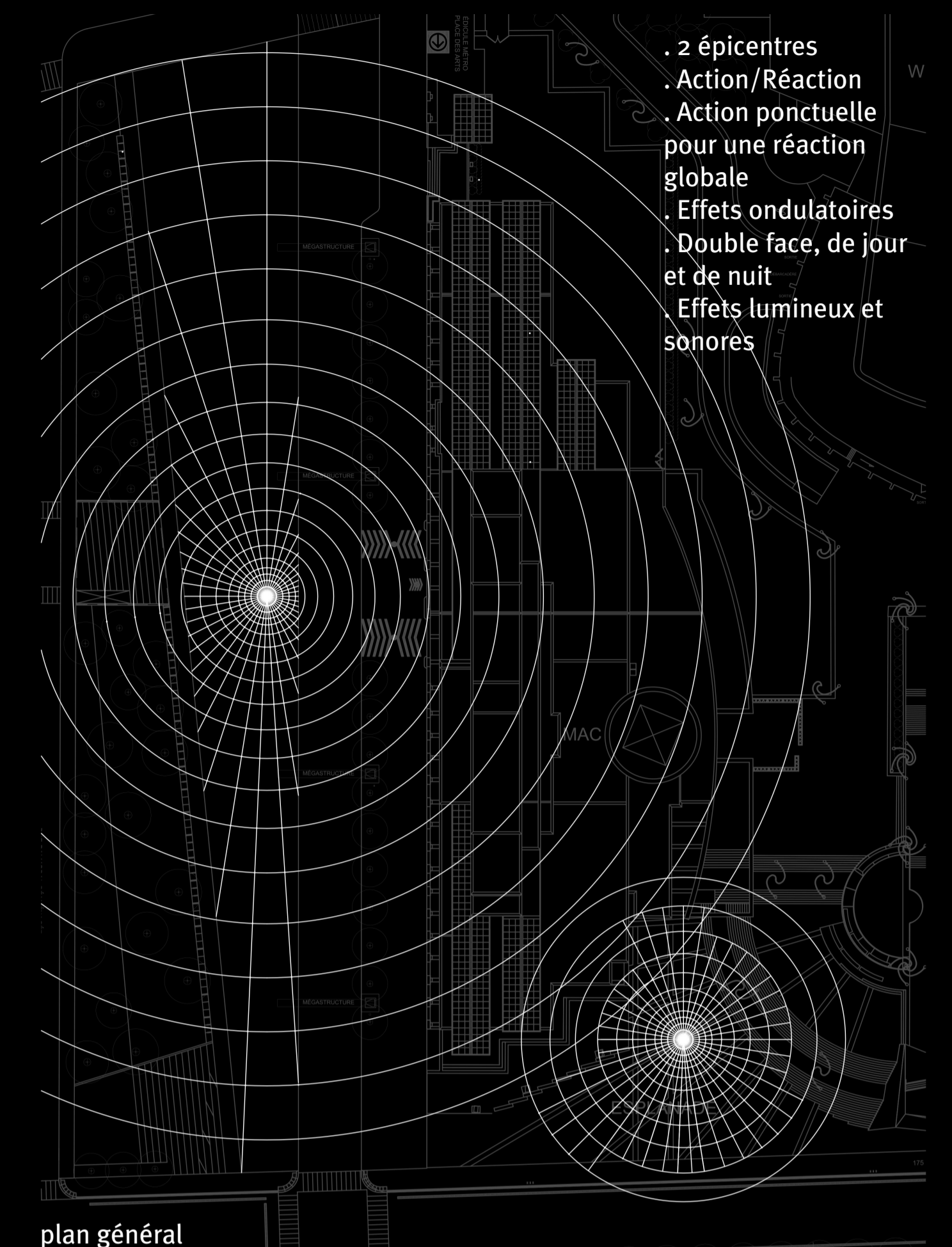


# EFFET PAPILLON



perspectives générales

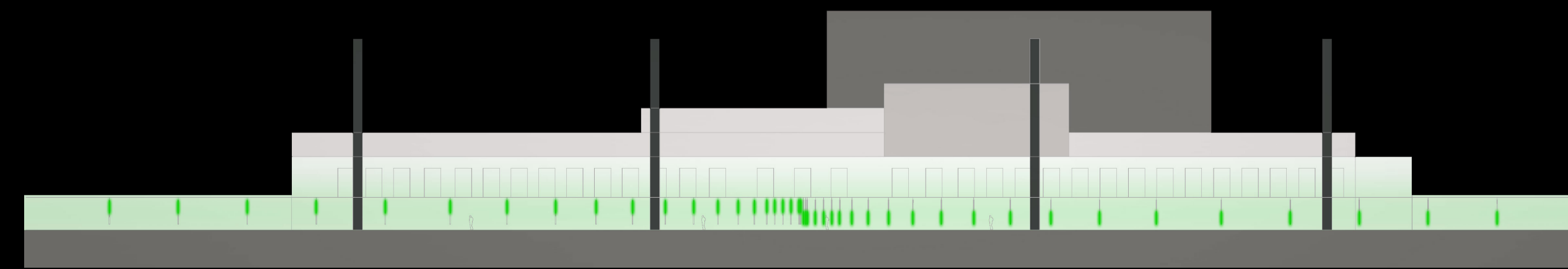
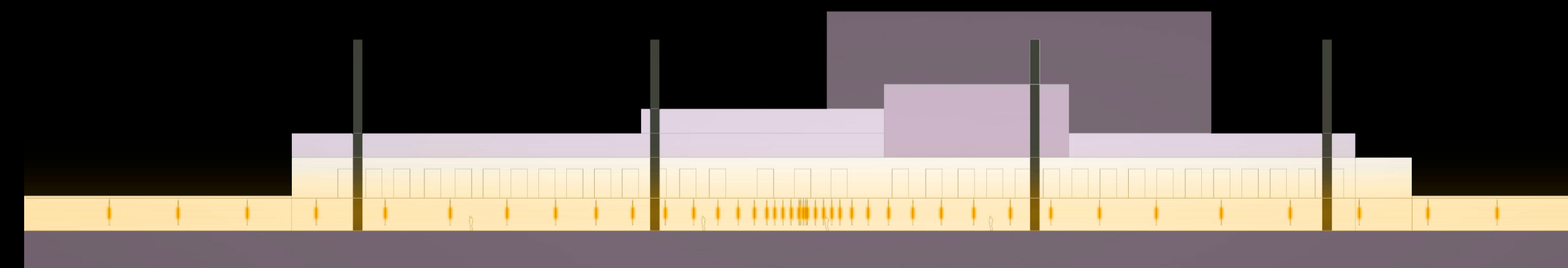
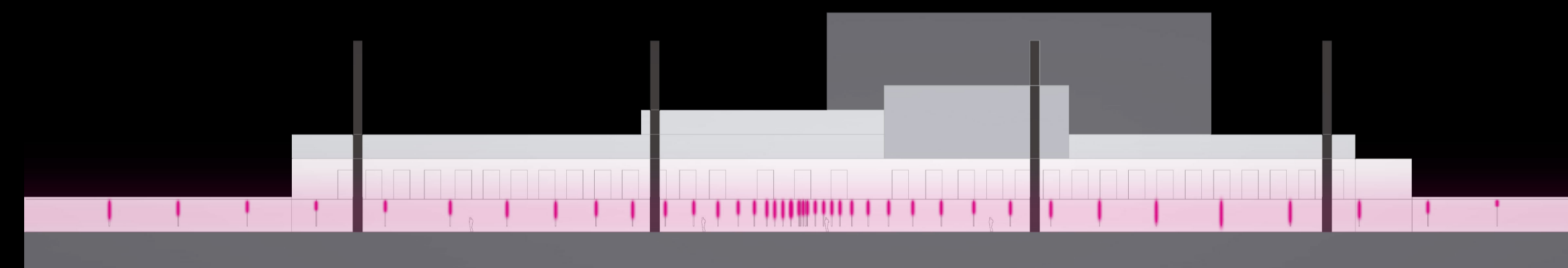


plan général

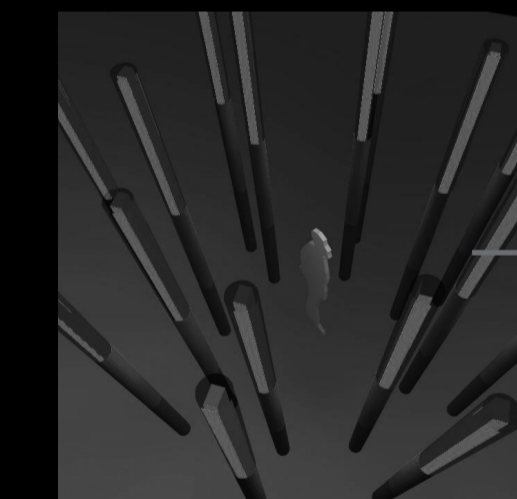
- . 2 épicentres
- . Action/Réaction
- . Action ponctuelle pour une réaction globale
- . Effets ondulatoires
- . Double face, de jour et de nuit
- . Effets lumineux et sonores



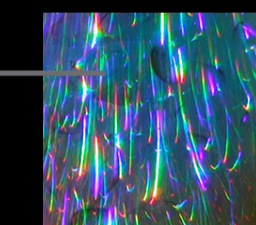
jour - nuit



coupes de la séquence lumineuse



wind chimes



effet holographique

